

eCaseLink 8.2™

Collecting clinical trial data more accurately and more efficiently

DSG's award-winning eCaseLink software is the most advanced EDC solution in the industry. eCaseLink helps you to achieve your business goals by consistently delivering high site acceptance, rapid and efficient workflow, and clean data. The results — faster submissions for your clinical trials.

eCaseLink provides the fastest start up, rapid database lock, and more rapid FDA submissions, resulting in greater ROI. eCaseLink features cross-panel edit checks that fire instantly upon data entry, eliminating trial delays and need for time consuming server calls, making it easier for your users to move through their data entry.

The highest site acceptance of any EDC system on the market

eCaseLink has the most user-friendly interface in the industry and our innovative data entry screens are configurable to your look and feel for your eCRFs. The system is flexible and highly configurable. It even adapts to a user's individual workflow with SmartLinks, which automatically adjust to the user interface creating a more efficient workflow for each user, based on their unique workflow patterns. Users can easily access interactive reports at any time, view a snapshot of queries, saved eCRFs, and enrollment, all using eCaseLink's proprietary dashboard from any screen — creating exceptional ease of use and high site acceptance, making electronic data entry easy.

Instant Validation

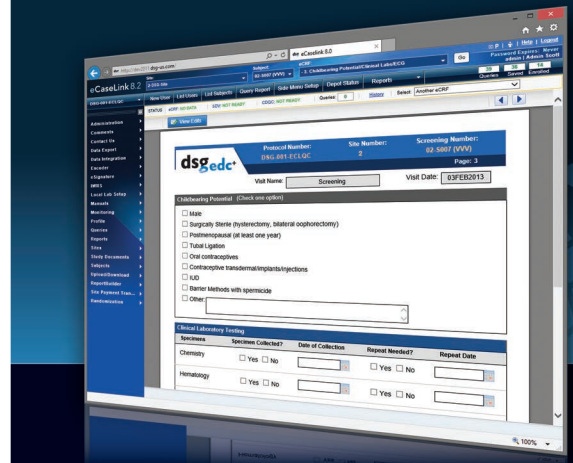
A unique feature in eCaseLink, not found anywhere else, is that all edits, including cross-panel logic checks, fire immediate warnings as soon as data is entered into fields. No submissions to the server and these instant edits eliminate multiple saves/submits for site users, reduce the amount queries generated and result in cleaner data, and rapid workflow.

Multi-language capabilities

eCaseLink's multi-language capabilities support trials worldwide. All data managers and clinicians work together collaboratively using a single, centrally-managed global database regardless of geographic location or language.

Mid-study changes in hours, not weeks

Mid-study changes are completed quickly, without any system downtime or interruption to the system users. All changes are seamless to users.



The eCaseLink 8.2™ advantage

- Control Your Entire Study
- Cuts Trial Costs
- Configurable Screens
- Streamlines Workflow
- Reduces Risk
- Fast Startup
- Rapid Database Lock
- Maximizes ROI
- Award-Winning EDC Software
- Multi-Language Studies
- Easiest EDC System To Use
- Standard, Custom & Ad-Hoc Reports
- CDISC Standards

dsgedc+
Innovation + Experience

www.dsg-us.com

➤ Local Lab Management System

eCaseLink enables data managers to effectively manage local labs, normal lab ranges, and also provides interactive review of laboratory data.

➤ Comprehensive eSourcing and Integration

Data integration functionality allows users to integrate and manage data from a wide variety of industry sources in a single database with convenient dashboards for viewing and accessing data including:

- Core, central, and specialty laboratory data
- IVRS
- CTMS
- ECG
- CT Scans and MRIs
- Topographies and Radiographics
- EMR
- Medical Device Output
- Safety Data

➤ Complete Reporting

eCaseLink comes with more than 30 standard reports and an ad-hoc reporting tool, allowing users to create their own custom or semi-custom reports based on the tables and fields of the databases. eCaseLink's reports help you manage, analyze and report various aspects of your study.

➤ Global Support

DSG provides 24/7 global support for all client deployments with experienced U.S.-based employees providing a clear advantage in costs, efficiency and expertise - versus outsourcing help desk to third parties.

➤ Clear Cost Advantage

DSG offers clients reasonable, straight-forward, cost effective pricing tailored to your needs.

➤ Results Driven Support

DSG's highly experienced professionals have both clinical and data expertise to support clients through every step. We believe it is integral to know our clients' business needs and to know how our support services will improve your clinical trials. Our dedicated teams and highly skilled project managers are a unique differentiator when using DSG and eCaseLink for your clinical study needs.

DSG provides dedicated teams who bring experienced-based and innovative ideas and solutions to your clinical trial challenges. You always have a highly trained project manager focused on your needs with rapid response. We still believe the most efficient way to work with customers is not only through technology but with agile and productive face-to-face support. It's how we've built the company and generated enhancements not from the inside, but from you, our customers.



eCaseLink's proprietary technology validates information field-by-field, including complex cross-visit edits, instantly. These immediate field validations decrease the number of times the user must submit a form and reduce the amount of queries that are generated. The result is clean data and a rapid workflow.

About DSG

DSG Inc. supports clinical trial data collection and management with innovative technology solutions including Electronic Data Capture with specialized Clinical Data Management services, Electronic Patient Diaries, Clinical Trial Management Systems and digital on-demand Case Report Form publishing management software. DSG has successfully supported thousands of clinical trials for hundreds of clients, with millions of patients across 93 countries, for over two decades. Founded in 1992, DSG is a global company headquartered in Malvern, Pa., with additional offices in the U.S., Japan and India.

DSG, Inc.

Global Headquarters
325 Technology Drive
Malvern PA 19355
Phone: +1 484-913-0210
email: sales@dsg-us.com

dsgedc⁺
Innovation+Experience

www.dsg-us.com